



# HUAYA ELECTRIC PRODUCT SELECTION

[www.ch-huaya.com](http://www.ch-huaya.com)

## WENZHOU HUAYA ELECTRIC CO.,LTD.

Add: Zhongshi Industry Zone, Beibaixiang Town,  
Yueqing City, Zhejiang Province, China 325602  
Tel: 86-577-62831230 62831231 62831232 62831233  
Fax: 86--577-62831239  
Web: [www.erele.com](http://www.erele.com) [www.ch-huaya.com](http://www.ch-huaya.com)  
E-mail: [sales@erele.com](mailto:sales@erele.com) [sales2@erele.com](mailto:sales2@erele.com)





# BRIEF INTRODUCTION



## Winning, Future

### Idea of enterprise

Precise Diligent Enterprising

### Mission of enterprise

Become an enterprise of international advanced production level in Electric devices

### Promise customers

Faithfulness have the benefit of customers and long-term development of "HUAYA" as direction of guiding and insist on the principle of "high standard and high quality"

### Promise Employees

Take employees as important asset and continuously offer fine working conditions and training for employees

**Wenzhou huaya Electric Co.,Ltd.** specializes in the manufacturing in Switches, GFCI, Receptacle, Dimmers, Datacom Jacks, Water proof Cover, Device Boxes, kinds of Wallplates, and so on, gathering lots of profession engineer and administrators. From establishing we regard product quality as the lifeline of the enterprise developing and the quality policy of "guaranteed product quality is taken as the foundation and demands from clients as the base" has been insistently followed. We have been got ISO9001(2000) certification, ETL/cETL and UL/cUL approvals. Each of the functional departments carries out the standard management with a computerized network system and imported production technologies and equipments are applied, therefore the products are always in the leading rank among in the same field.

The Co. holds rich production experiences, good group spirits, good work team, strong technical force and excellent quality control system. Huaya Electric features well-known, unique, excellent, brand-new and full varieties and is well sold to USA, Canada, nations in southeast Asia etc., greatly favored and evaluated by the businessmen thereof and enjoying a high reputation.

Since China gets into WTO, the Co. has not only optimized the production structure, but also paid much attention to the enhancement of the staff's quality. Taking people as the base and prospering enterprise with science and technique, as only highly qualified staff can make high product and provide excellent services. Our target is to make the best quality product for serving consumer and our aim of service is to guarantee the quality to let partner have confidence.







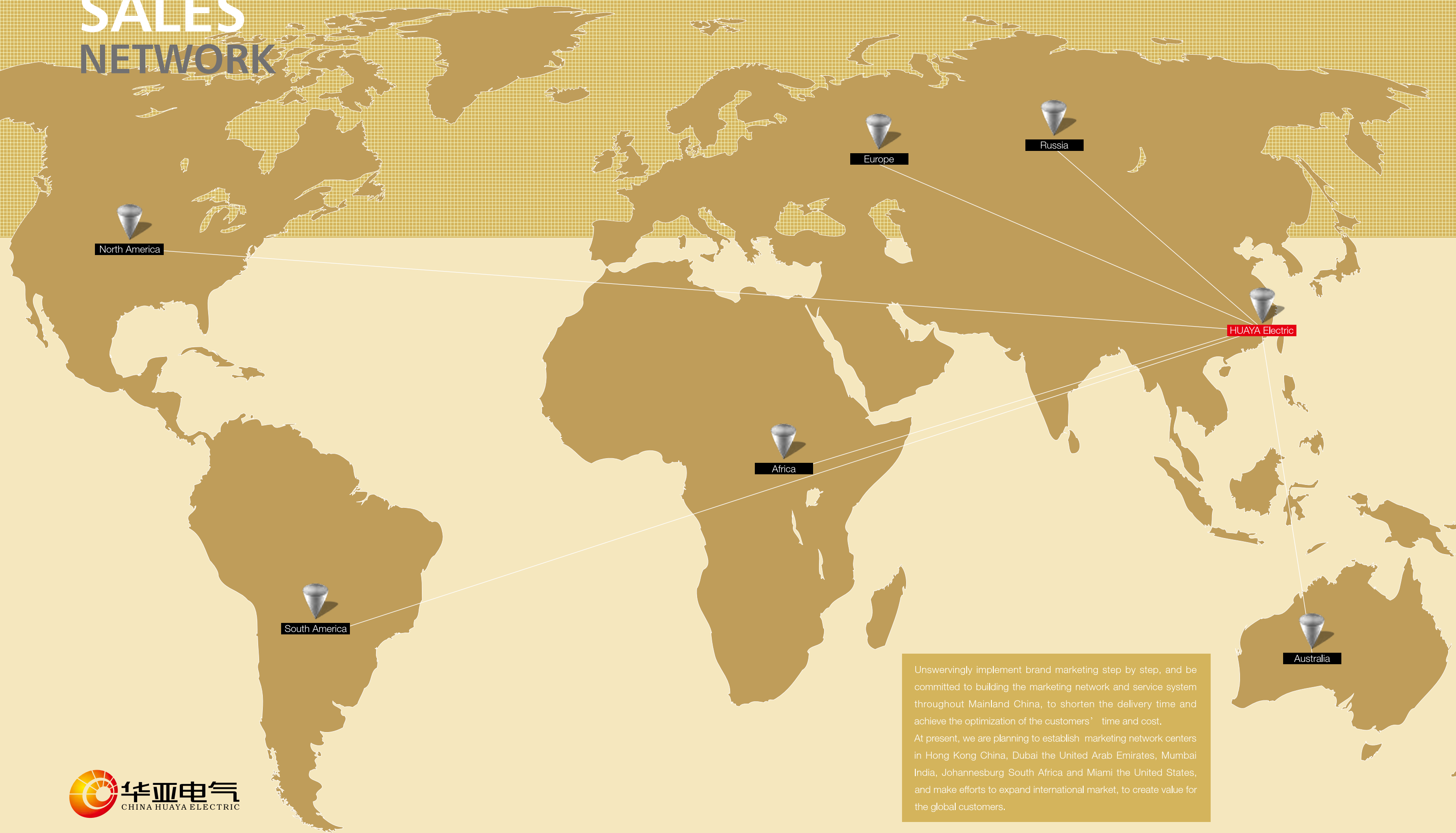
# PRODUCTION OFFICE & WORKSHOP

In order to guarantee quality of every product, we select exquisite craftsmanship, excellent equipment, complete technical documents and highly trained workers as our foundation, and execute strict inspection and supervision, and strengthen the effective management of full processes of product manufacturing.





# SALES NETWORK



Unswervingly implement brand marketing step by step, and be committed to building the marketing network and service system throughout Mainland China, to shorten the delivery time and achieve the optimization of the customers' time and cost.

At present, we are planning to establish marketing network centers in Hong Kong China, Dubai the United Arab Emirates, Mumbai India, Johannesburg South Africa and Miami the United States, and make efforts to expand international market, to create value for the global customers.

# PRODUCT CONTENTS

Toggle Switch	01
Decora Rocker Switch	2-3
Standard Duplex Receptacle	04
Decora Duplex Receptacle	05
Tamper-resistant Receptacle	05
Single Receptacle	06
Smart Lock GFCI	7-8
USB Receptacle	09
Straight Blade Power Receptacle	10
Receptacle & Plug	10
Dimmer	11
Nonmetallic Box	12-13
Wallplate	14-18





## Toggle Switch

15Amp, 120VOLT, Toggle framed AC quiet Switch,  
Residential Grade, Grounding, Quick-wire Push-in & Side Wired, color is optional.

### Product Features

- ☐ Ground: U-Grounding Screws
- ☐ Feature: Framed
- ☐ Amperage: 15Amp
- ☐ Voltage: 120VAC.
- ☐ HP Rating: 1/2HP - 120V AC
- ☐ Max. Amp: 12Amp
- ☐ Termination: Quick-wire Push-In & Side wired
- ☐ Material: Thermoplastic
- ☐ Body Material: Thermoplastic
- ☐ Strap Material: Steel
- ☐ Std. Color: White, Ivory, Almond, Black, Brown, Black
- ☐ Standards & Cert.: UL/CUL



**LD-2101**

Single Pole



**LD-2102**

Three Way



**LD-2103**

20A, 120/277VAC  
Commercial grade,  
Single pole toggle switch

## Decora Rocker Switch

15Amp, 120/277VOLT, Decorative rocker AC quiet Switch,  
Residential Grade, Grounding, Quick-wire Push-in & Side Wired, color is optional.



**LD-2001** — Single Pole

**LD-2002** — Three Way



**LD-2202** — Single Pole



**LD-2203** — Single Pole

### Decora Rocker Switch

- ☐ Ground: U-Grounding screw
- ☐ Amperage: 15Amp
- ☐ Voltage: 120/277VAC.
- ☐ HP Rating: 1/2HP-120V, 2HP-240V-277V
- ☐ Max. Amp: 12Amp
- ☐ Termination: Quick-wire Push-In & Side wired
- ☐ Material: Thermoplastic
- ☐ Body Material: Thermoplastic
- ☐ Strap Material: Steel
- ☐ Color: White, Ivory, Almond, Black, Brown, Black
- ☐ Standards & Cert.: UL/CUL

### Decora Com Rocker Switch

- ☐ Rocker No.: 2
- ☐ Ground: Grounding
- ☐ Amperage: 15Amp
- ☐ Voltage: 120/277VAC.
- ☐ HP Rating: 1/2HP-120V, 2HP-240V-277V
- ☐ Max. Amp: 12Amp
- ☐ Termination: Quick-wire Push-In
- ☐ Material: Thermoplastic
- ☐ Body Material: Thermoplastic
- ☐ Strap Material: Steel
- ☐ Color: White, Ivory, Almond, Black, Brown, Black
- ☐ Standards & Cert.: UL/CUL

### Decora Com Rocker Switch

- ☐ Rocker No.: 3
- ☐ Ground: Grounding
- ☐ Amperage: 15Amp
- ☐ Voltage: 120/277VAC.
- ☐ HP Rating: 1/2HP-120V, 2HP-240V-277V
- ☐ Max. Amp: 12Amp
- ☐ Termination: Quick-wire Push-In
- ☐ Material: Thermoplastic
- ☐ Body Material: Thermoplastic
- ☐ Strap Material: Steel
- ☐ Color: White, Ivory, Almond, Black, Brown, Black
- ☐ Standards & Cert.: UL/CUL



## Decora Rocker Switch



**LD-2211**

Single pole Double Switch  
15A, 120/277V  
Back & side wire



**LD-2213**

Single pole Switch & Pilot light  
15A, 125V  
Back & side wire

### Product Features

- ☐ UL Listed;
- ☐ Various kind of colors available;
- ☐ Washer-type break-off plaster ear for best flush alignment;
- ☐ Captive mounting screws;
- ☐ Back and side wiring for easy installation;
- ☐ Easy-access green hex head ground screw;



## Standard Duplex Receptacle

15Amp, 125Volt, 2P, 3W, With Ears Duplex receptacle, Straight Blade, Residential, Grounding, All screws backed Out contractor Pack, quick-wire Push- In & Side Wired, Steel Strap, color is optional.

### Product Features

- ☐ Ground: U-Grounding Screw
- ☐ Feature: All Screws Backed Out Contractor Pack
- ☐ Amperage: 15Amp
- ☐ Voltage: 120V AC
- ☐ NEMA: 5-15R or 5-15P or 5-15R & 5-15P Combination
- ☐ Pole: 2
- ☐ Wire: 3
- ☐ Termination: Quick-wire Push-In & Side
- ☐ Face Material: Thermoplastic
- ☐ Body Material: Thermoplastic
- ☐ Strap material: Steel
- ☐ Standard Color: White, Ivory, Black, Almond, Grey, Brown
- ☐ Standard & Certification; UL/CUL



**LD-3010**



**LD-3016**

20Amp, 125Volt, 2P, 3W, With Ears Duplex receptacle, Straight Blade, Residential, Grounding, All screws backed Out contractor Pack, quick-wire Push- In & Side Wired, Steel Strap, color is optional.

### Product Features

- ☐ Ground: U-Grounding Screw
- ☐ Feature: All Screws Backed Out Contractor Pack
- ☐ Amperage: 15Amp
- ☐ Voltage: 120V AC
- ☐ NEMA: 5-20R & 5-20P Combination
- ☐ Pole: 2
- ☐ Wire: 3
- ☐ Termination: Quick-wire Push-In & Side
- ☐ Face Material: Thermoplastic
- ☐ Body Material: Thermoplastic
- ☐ Strap material: Steel Standard Color: White, Ivory, Black, Almond, Grey, Brown
- ☐ Standard & Certification: UL/CUL



**LD-3011**



**LD-3014**



## Decora Duplex Receptacle

15Amp & 20Amp, 125Volt, 2P, 3W, Decora plus Duplex receptacle, Straight Blade, Self-Grounding, All screws backed Out contractor Pack, quick-wire Push- In & Side Wired, Steel Strap, color is optional.

### Product Features

- ☐ Ground: Self-Grounding
- ☐ Feature: All Screws Backed Out Contractor Pack
- ☐ Amperage: 15A & 20A
- ☐ Voltage: 120V AC
- ☐ NEMA: 5-15R and 5-20R
- ☐ Pole: 2
- ☐ Wire: 3
- ☐ Termination: Quick-wire Push-In & Side
- ☐ Face Material: Thermoplastic
- ☐ Body Material: Thermoplastic
- ☐ Strap material: Steel
- ☐ Standard Color: White, Ivory, Black, Almond, Grey, Brown
- ☐ Standard & Certification; UL/CUL



LD-3012



LD-3013

## Tamper-resistant Receptacle



LD-3010(TR)

LD-3011(TR)

LD-3012(TR)

LD-3013(TR)

## Single Receptacle

15Amp & 20Amp, 125Volt, 2P, 3W, Narrow Body receptacle, Straight Blade, Grounding, All screws backed Out contractor Pack, Side Wired, Steel Strap, color is optional.

### Product Features

- ☐ Ground: Self-Grounding
- ☐ Amperage: 15Amp
- ☐ Voltage: 120V AC
- ☐ NEMA: 5-15R, 5-20R, 5-15P, 5-20P
- ☐ Pole: 2
- ☐ Wire: 3
- ☐ Termination: Quick-wire Push-In & Side
- ☐ Face Material: Thermoplastic
- ☐ Body Material: Thermoplastic
- ☐ Strap material: Steel
- ☐ Standard Color: White, Ivory, Black, Almond, Grey, Brown



LD-3102



## Smart Lock GFCI

15Amp, 120Volt, NEMA5-15R, 2P, 3W, Decora plus duplex receptacle, straight blade, GFCI ground fault, Smart Lock, Button match face color, Back and Side 20A, Feed- thru wired, Steel strap, color is optional.

### Product Features

- ☐ Ground: Grounding
- ☐ Feature: Smart Lock, button match face color or standard.
- ☐ Amperage: 15Amp and 20Amp
- ☐ Voltage: 120V AC
- ☐ NEMA: 5-15R and 5-20R
- ☐ Pole: 2
- ☐ Wire: 3
- ☐ Termination: Back and Side 20Amp feed-thru
- ☐ Face material: Thermoplastic
- ☐ Body Material: Thermoplastic
- ☐ Strap material: Steel
- ☐ Standards & certifications: ETL/cETL

### Without TR GFCI



**LD-3001**

15A, Without LED light indicator



**LD-3002**

20A, Without LED light indicator



**LD-3003**

15A, With LED light indicator



**LD-3004**

20A, With LED light indicator

Dielectric---Withstands 1500V per UL 498

Current Limit:10kA

Temperature Rise: Max.30°C after 50 cyc OL 150 pct rate current



### TR GFCI



**LD-3008A**

15A, With LED light indicator



**LD-3008B**

20A, With LED light indicator

### TR&WR GFCI



**LD-3008C**

15A, With LED light indicator



**LD-3008D**

20A, With LED light indicator



## USB Receptacle



## Straight Blade Power Receptacle

UL Listed, 50 Amp, 125/250 Volt, NEMA 10-30R, 3P, 3W, Flush Mtg Receptacle, Non-Grounding, Side Wired, Steel Strap, Heavy duty plastic construction



**LD-3201 50A**

UL Listed, 30 Amp, 125/250 Volt, NEMA 10-30R, 3P, 3W, Flush Mtg Receptacle, Non-Grounding, Side Wired, Steel Strap; Heavy duty plastic construction



**LD-3205 30A**

### Electrical Specifications

Dielectric Voltage Withstands 2000V per UL498;  
Current Limiting: Full Rated Current;  
Temperature Rise: Max 30C after 50 cyc OL at 150 pct rated current

### Mechanical Specifications

Terminal ID: Brass-Hot, Green-Ground,  
Terminal Accom.: White-Neutral; Up to 4 AWG

### Material Specifications

Face & body Material: Heavy duty plastic;  
Product ID: Ratings are permanently marked on device;  
Line Contacts: Brass Double-Wipe;  
Yoke: Zinc-Plated Steel

### Environmental Specifications

Flammability: Rated V-2 per UL94;  
Operating Temp.: -40C to 60C

### AC Horsepower Ratings

At Rated Voltage: 2 HP

Standards and Certifications: UL498

## Receptacle & Plug



**LD-2122**

**LD-3714**

**LD-3715**



## Dimmer

Diva Dimmer 120V 60HZ



Rotary Dimmer 120V/60HZ



**LD-4001** Single pole, 600W

**LD-4002** Single pole, 1000W

**LD-4003** Three way, 600W

**LD-4004** Three way, 1000W

**LD-4001LA** Single pole, 600W with light

**LD-4002LA** Single pole, 1000W with light

**LD-4003LA** Three way, 600W with light

**LD-4004LA** Three way, 1000W with light

**LD-4040** single pole, 700W

**LD-4041** single pole, 600W

**LD-4042** Three Way, 700W

**LD-4043** Three Way, 600W



## Nonmetallic Box



**LD-8011**



**LD-8012**

### Switch/Outlet Boxes

Part No.	Volume (cu. In.)	Description	Size	Knockouts	Std. Ctn. Qty.	Std. Ctn. Wt. (lbs)
LD-8011	18	Single Gang with captive nails	27/8"D × 21/4"W × 33/4"L	2 (2 each end)	100	22
LD-8012	20	Single Gang with captive nails	31/4"D × 21/4"W × 33/4"L	2 (2 each end)	100	24

◆ Suitable for masonry walls



**LD-8017**



**LD-8019**



**LD-8020**

### Meets NEMA OS-2

Part No.	Volume (cu. In.)	Description	Size	Knockouts	Std. Ctn. Qty.	Std. Ctn. Wt. (lbs)
LD-8017	32	Two Gang with captive nails	1"D × 4"W × 3 3/4"L	8 (4 each end)	50	16
LD-8019	44	Three Gang with captive nails	211/16"D × 33/4"W × 55/8"L	12 (6 each end)	50	21
LD-8020	60	Four Gang with captive nails and bracket support	21/2"D × 37/10"W × 73/5"L	12 (8 each end)	25	14

## Nonmetallic Box



**LD-8030**



**LD-8332**

### Ceiling

Part No.	Volume (cu. In.)	Description	Size	Integral Clamps	Std. Ctn. Qty.	Std. Ctn. Wt. (lbs)
LD-8030	18	Round Old Work Case 3 Zip-Mount™ retainers	2 3/4"D	4	100	24

Part No.	Volume (cu. In.)	Description	Size	Integral Clamps	Std. Ctn. Qty.	Std. Ctn. Wt. (lbs)
LD-8332	24	4" Square Box	4" × 4" × 2.16"	4	50	42



## Wallplate



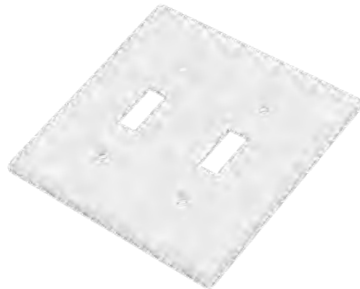
**LD-7001**

1 Gang Toggle Switch Cover, Standard Size 2.75"x4.5"	
LD-7001	Plastic



**LD-7091**

1 Gang Toggle Switch Cover, Standard Size 2.75"x4.5"	
LD-7081	Burshed Stainless Steel
LD-7091	Polished Stainless Steel



**LD-7002**

2 Gang Toggle Switch Cover, Standard Size 4.563"x4.5"	
LD-7002	Plastic



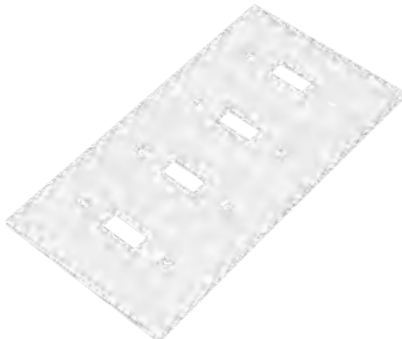
**LD-7092**

2 Gang Toggle Switch Cover, Standard Size 4.563"x4.5"	
LD-7082	Burshed Stainless Steel
LD-7092	Polished Stainless Steel



**LD-7003**

3 Gang Toggle Switch Cover, Standard Size 6.375"x4.5"	
LD-7003	Plastic



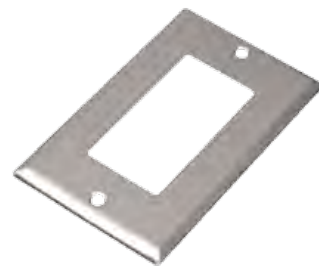
**LD-7004**

4 Gang Toggle Switch Cover, Standard Size 8.188"x4.5"	
LD-7004	Plastic



**LD-7101**

1 Gang Decora Switch Cover, Standard Size 2.75"x4.5"	
LD-7101	Plastic



**LD-7191**

1 Gang Decora Switch Cover, Standard Size 2.75"x4.5"	
LD-7181	Burshed Stainless Steel
LD-7191	Polished Stainless Steel

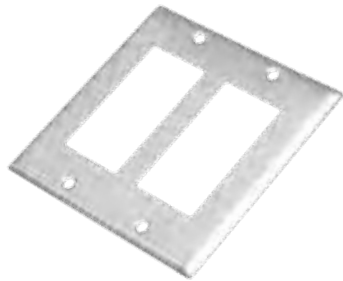


**LD-7102**

2 Gang Decora Switch Cover, Standard Size 4.563"x4.5"	
LD-7102	Plastic

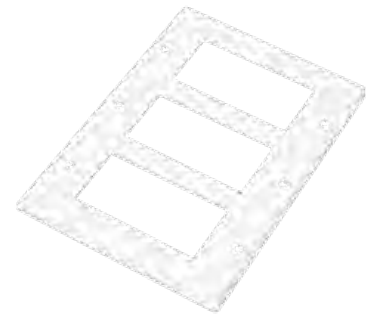


## Wallplate



**LD-7192**

2 Gang Decora Switch Cover, Standard Size 4.563"x4.5"	
LD-7182	Burshed Stainless Steel
LD-7192	Polished Stainless Steel



**LD-7103**

3 Gang Decora Switch Cover, Standard Size 6.375"x4.5"	
LD-7103	Plastic



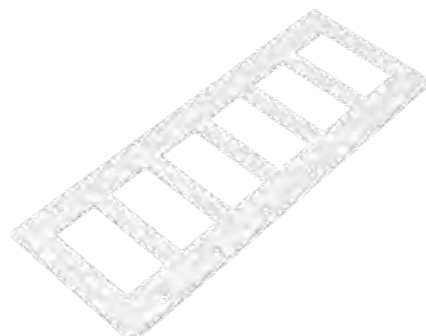
**LD-7104**

4 Gang Decora Switch Cover, Standard Size 8.188"x4.5"	
LD-7104	Plastic



**LD-7105**

5 Gang Decora Switch Cover, Standard Size 10"x4.5"	
LD-7105	Plastic



**LD-7106**

6 Gang Decora Switch Cover, Standard Size 11.81"x4.5"	
LD-7106	Plastic



**LD-7201**

1 Gang Duplex Receptacle Cover, Standard Size 2.75"x4.5"	
LD-7201	Plastic



**LD-7291**

1 Gang Duplex Receptacle Cover, Standard Size 2.75"x4.5"	
LD-7281	Burshed Stainless Steel
LD-7291	Polished Stainless Steel



**LD-7202**

2 Gang Duplex Receptacle Cover, Standard Size 4.563"x4.5"	
LD-7202	Plastic



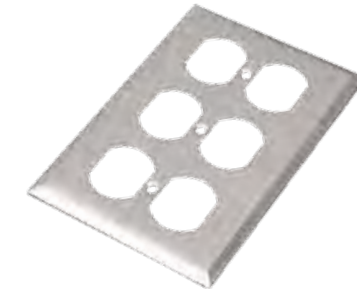
**LD-7292**

2 Gang Duplex Receptacle Cover, Standard Size 4.563"x4.5"	
LD-7282	Burshed Stainless Steel
LD-7292	Polished Stainless Steel



**LD-7203**

3 GGang Duplex Receptacle Cover, Standard Size 6.375"x4.5"	
LD-7203	Plastic



**LD-7293**

3 GGang Duplex Receptacle Cover, Standard Size 6.375"x4.5"	
LD-7283	Burshed Stainless Steel
LD-7293	Polished Stainless Steel



**LD-7107**

2G Com Cover(Toggle & Decora), Standard Size 4.563"x4.5"	
LD-7107	Plastic



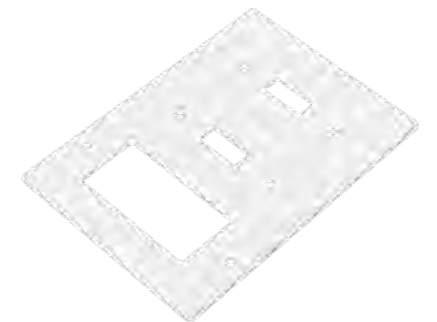
**LD-7207**

2G Com Cover(Toggle & Duplex), Standard Size 4.563"x4.5"	
LD-7207	Plastic



**LD-7297**

2G Com Cover(Toggle & Duplex), Standard Size 4.563"x4.5"	
LD-7287	Burshed Stainless Steel
LD-7297	Polished Stainless Steel



**LD-7208**

3G Com Cover(Toggle & Decora) Standard Size 6.375"x4.5"	
LD-7208	Plastic



**LD-7307**

2G Com Cover(Decora & Duplex), Standard Size 4.563"x4.5"	
LD-7307	Plastic



**LD-7397**

2G Com Cover(Decora & Duplex), Standard Size 4.563"x4.5"	
LD-7387	Burshed Stainless Steel
LD-7397	Polished Stainless Steel



**LD-7491**

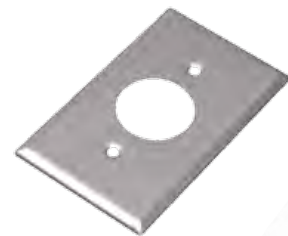
1 Gang phone & Coaxial Cover, Standard Size 2.75"x4.5"	
LD-7481	Burshed Stainless Steel
LD-7491	Polished Stainless Steel

## Wallplate



**LD-7402**

1 Gang Single Receptacle Cover, Standard Size 2.75"x4.5"	
LD-7402	Plastic



**LD-7492**

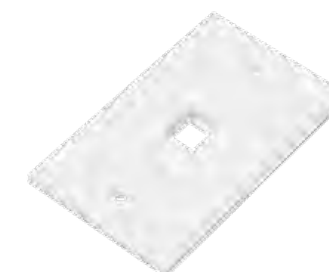
1 Gang Single Receptacle Cover, Standard Size 2.75"x4.5"	
LD-7482	Burshed Stainless Steel
LD-7492	Polished Stainless Steel

## Wallplate



**LD-7101A**

1 Gang Screwless Cover, Standard Size 2.75"x4.5"	
LD-7101A	Plastic



**LD-7601**

1 Gang Broadband Cover, Standard Size 2.75"x4.5"	
LD-7601	Plastic



**LD-7602**

2 Gang Broadband Cover, Standard Size 2.75"x4.5"	
LD-7602	Plastic



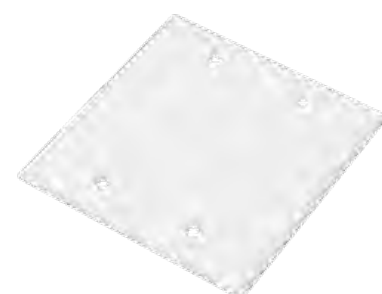
**LD-7501**

1 Gang Blank Cover, Standard Size 2.75"x4.5"	
LD-7501	Plastic



**LD-7591**

1 Gang Blank Cover, Standard Size 2.75"x4.5"	
LD-7581	Burshed Stainless Steel
LD-7591	Polished Stainless Steel



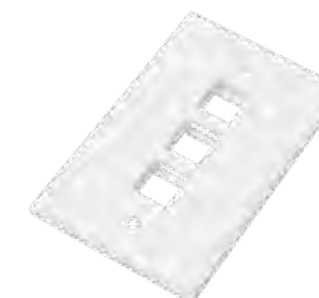
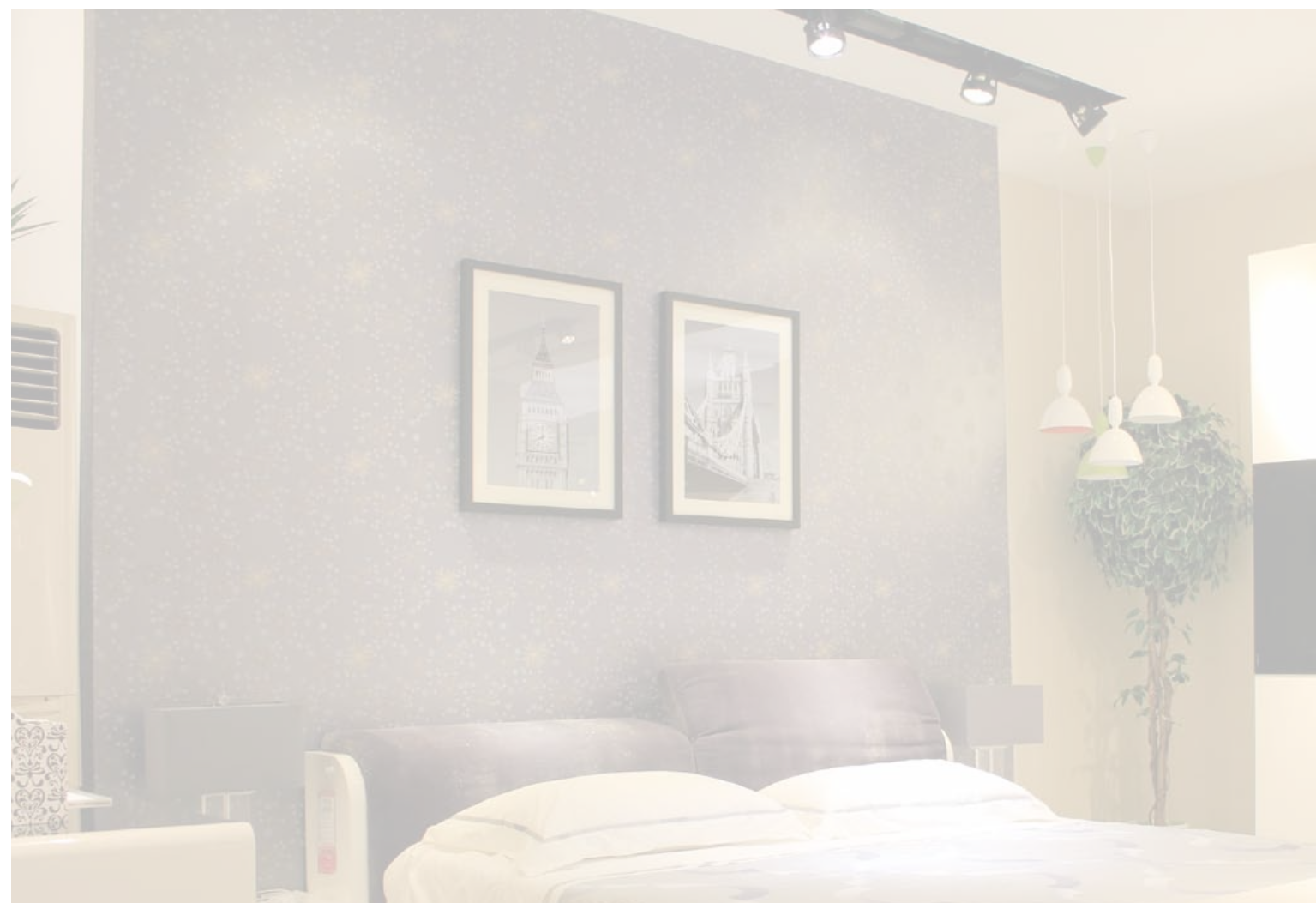
**LD-7502**

2 Gang Blank Cover, Standard Size 4.563"x4.5"	
LD-7502	Plastic



**LD-7592**

2 Gang Blank Cover, Standard Size 4.563"x4.5"	
LD-7582	Burshed Stainless Steel
LD-7592	Polished Stainless Steel



**LD-7603**

3 Gang Broadband Cover, Standard Size 2.75"x4.5"	
LD-7603	Plastic



**LD-7604**

4 Gang Broadband Cover, Standard Size 2.75"x4.5"	
LD-7604	Plastic